

Top Stainless Steel Mills **in China**

Trusted Sources Behind
SANMEI Quality



TEL: +8615015653566 / 0757-87668353
Email: marketing@sanmeimetal.com



03 Lisco

06 Hongwang

09 Yongjin

12 Tisco

23 Jisco

27 Tsingshan

2023
COILS

About Us

Rooted in Foshan's stainless steel hub, SANMEI represents the integration of China's finest steel resources and global vision.

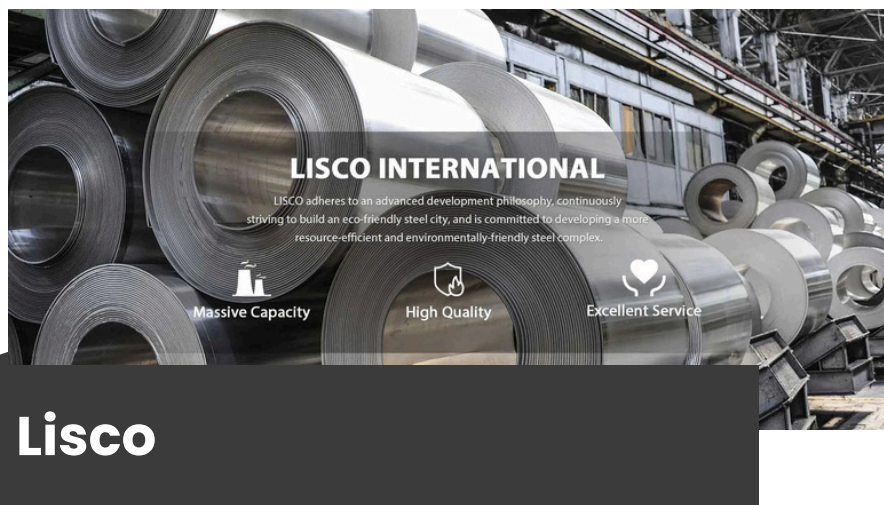
We collaborate with major Chinese mills to offer comprehensive stainless steel solutions—from coils to decorative and structural applications.

Driven by quality, customization, and trust, SANMEI has become a preferred partner for clients seeking reliable material sourcing from China.

Trusted Mill
Partners

20+





Integrated Production, Sustainable Innovation

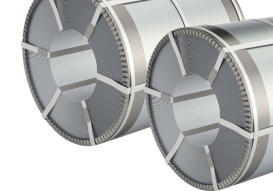
LISCO (Lianzhong Stainless Steel Co., Ltd.) is one of China's top three stainless steel producers and the only mill in the country integrating steelmaking, hot rolling, and cold rolling on one site. With an annual capacity of over 5.76 million tonnes, LISCO supplies a wide range of grades including 201, 304, 316L, and 430, available in both hot-rolled (3.0-12.0 mm, up to 2000 mm width) and cold-rolled (0.3-3.0 mm, up to 1500 mm width) formats.

Known for its eco-compliance and high formability, LISCO's 304F grade is specially developed for European OEMs, meeting EU REACH environmental standards through by-product recycling, waste-heat recovery, and zero-sludge landfill processes.

Its material offers an excellent balance of mechanical properties — Yield Strength 205 MPa, Elongation 55%, and Carbon Content ≤ 0.03%, while reducing nickel consumption by about 4% compared with standard 304, without compromising performance.

LISCO's innovation in clean production and material efficiency makes it one of the most competitive stainless steel mills in China, trusted by global clients for sustainable and cost-effective sourcing.

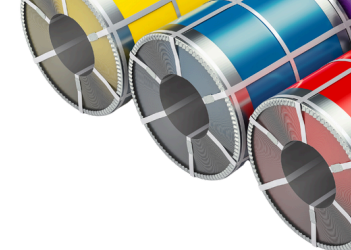
STEEL GRADE AND SIZE RANGE



Type	China GB	Japan JIS	U.S.A. ASTM	Europe EN
Austenite	—	—	S20100、201	—
	12Cr17Ni7	SUS 301	S30100、301	1.4319
	0.22Cr17Ni7	SUS 301L	S30103、301L	—
	0.22Cr17Ni7N	—	S30153、301LN	1.4318
	06Cr19Ni10	SUS 304	S30400、304	1.4301
	0.22Cr19Ni10	SUS 304L	S30403、304L	1.4307
	—	SUS 304L1	—	—
	06Cr23Ni13	SUS 309S	S30908、309S	1.4833
	06Cr25Ni20	SUS 310S	S31008、310S	1.4845
	0.22Cr17Ni12Mo ₂	SUS 316L	S31603、316L	1.4404
Ferrite	06Cr17Ni12Mo ₂ Ti	SUS 316Ti	S31635、316Ti	1.4571
	0.22Cr19Ni13Mo ₃	SUS 317L	S31703、317L	1.4438
	06Cr18Ni11Ti	SUS 321	S32100、321	1.4541
	10Cr15	SUS 429	S42900、429	—
	10Cr17	SUS 430	S43000、430	1.4016
	019Cr18MoTi	SUS 436L	S43600	1.4526

STEEL GRADE AND SIZE RANGE

Type	China GB	Japan JIS	U.S.A. ASTM	Europe EN
Ferrite	0.22Cr18Ti	SUS 430LX	S43932	1.451
	0.22Cr18Nb	—	S43940	1.4509
	019Cr21CuTi	SUS 443/1	S44330	—
	019Cr23Mo2Ti	SUS 445/2	—	—
	022Cr13Ti	SUH 409L	S40910	1.4512
	022Cr12	SUS 410L	S41003	—
	T4003	—	—	—
	022Cr12N	—	S40977	1.4003
	019Cr19Mo2NbTi	SUS 444	S44400、444	1.4521
Martensite	06Cr13	SUS 410S	S41008、410S	1.4
	12Cr13	SUS 410	S41000、410	1.4006
	20Cr13	SUS 4201L	S42000、420	1.4021
	30Cr13	SUS 4202L	S42000、420	1.4028
	40Cr13	—	—	1.4031
	50Cr15MoV	—	—	1.4116
Austenite-ferrite	022Cr23Ni5Mo3N	SUS3293L	S32205、2205	1.4462
	022Cr25Ni7Mo4N	—	S32750、2507	1.441



Color Pioneer in China's Stainless Steel Industry

Hongwang Group (HWHG) is recognized as the world's largest single-owner cold rolling producer, with a total 6 million tonnes of cold-rolling capacity distributed across multiple advanced production bases in China.

The company's manufacturing range covers 0.2–3.0 mm thickness and widths up to 1250 mm, offering 2B, BA, 8K, and color-coated surfaces with exceptional color consistency ($\Delta E \leq 0.3$) — a benchmark for uniform finish quality in architectural and decorative stainless steel.

As the first enterprise in China to develop color-coated stainless steel coils, Hongwang has set industry standards in both technology and aesthetics. Its coating system includes continuous color coating, mirror 8K color, satin color, and oil color series, covering 200/300/400 series grades and thicknesses from 0.3–2.0 mm.

These materials are widely used in luxury interiors, elevators, and high-end decorative projects, delivering stable color tone, high brightness, and strong corrosion resistance. With its massive scale, precise color control, and leading surface innovation, Hongwang continues to define the visual and technical excellence of China's color stainless steel industry.

Color Coated Stainless Steel

Grades	Product Series	Process Base	Surface Types	Key Features/ Parameters	Thickness(mm)
200/300/400 series	Single-sheet Continuous Coating	Mirror/ Hairline	Rose gold, rose red, Black titanium, etc.	Nano anti-fingerprint coating; Wear resistance ≥ 1000 cycles (MEK)	0.3-2
	Mirror 8K	2B / BA cold-rolled	Standard mirror (8K), Precision mirror (Super 8K)	Gloss $\geq 1300GU(20^\circ)$; Surface roughness $\leq 0.02 \mu m$	
	Hairline/ Satin Finish	2B / BA cold-rolled	Snowflake satin, snowflake+hairline, standard satin, satin+hairline, etc.	Multiple satin finish combinations; No coating	
	Mirror 8K Color Series	Mirror 8K	Mirror rose gold, mirror titanium gold, mirror bronze, Mirror champagne gold, Mirror black titanium, etc.	Coating thickness $\geq 0.15 \mu m$; Wear resistance ≥ 1000 cycles (MEK)	
	Satin Color Series	Satin finish (belt ground)	Satin rose gold, satin titanium gold, satin bronze, satin champagne gold, satin black titanium, etc.	Coating thickness $\geq 0.18 \mu m$; Wear resistance ≥ 1000 cycles (MEK)	

Grades	Product Series	Process Base	Surface Types	Key Features/ Parameters	Thickness(mm)
200/300/400 series	Oil Color Series	Black titanium / Satin	Brushed red bronze, Brushed green bronze, Brushed yellow bronze, Chinese red, Rainbow hairline, etc.	Anti-fingerprint coating thickness $\geq 1.5 \mu m$; Wear resistance ≥ 100 cycles	0.3-2



Basic Finish Stainless Steel

Grade	Surface Finish	Thickness(mm)
200/300/400 series	No.2E	1.0-3.0
	No.2D	0.25-3.0
	No.2B	0.25-3.0
	BA	0.25-1.5



Yongjin

Precision Cold Rolling Redefined

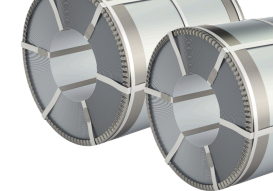
Founded in 2003, Yongjin Metal Technology Co., Ltd. (YONGJIN) is one of China's most advanced cold-rolled stainless steel producers, specializing in high-precision rolling and premium surface finishes. Headquartered in Taizhou, Zhejiang, the company operates multiple production bases across Zhejiang, Fujian, Guangdong, and Vietnam, with an annual capacity exceeding 2 million tonnes.

YONGJIN holds over 320 national patents and ranks among the Top 300 manufacturing enterprises in China, reflecting its strong technological innovation and consistent pursuit of quality. Its main products include 200, 300, and 400 series cold-rolled stainless steel, with thicknesses ranging from 0.25–3.0 mm and widths up to 1300 mm, available in 2B, BA, 8K, HL, and color-coated finishes.

YONGJIN is especially known for its ultra-flat surface precision and mirror-grade brightness control, making it a preferred supplier for premium home appliances, elevators, kitchenware, and architectural applications.

Through continuous process optimization, environmental management, and surface technology innovation, YONGJIN has become a benchmark for high-end cold-rolled stainless steel in China and Southeast Asia.

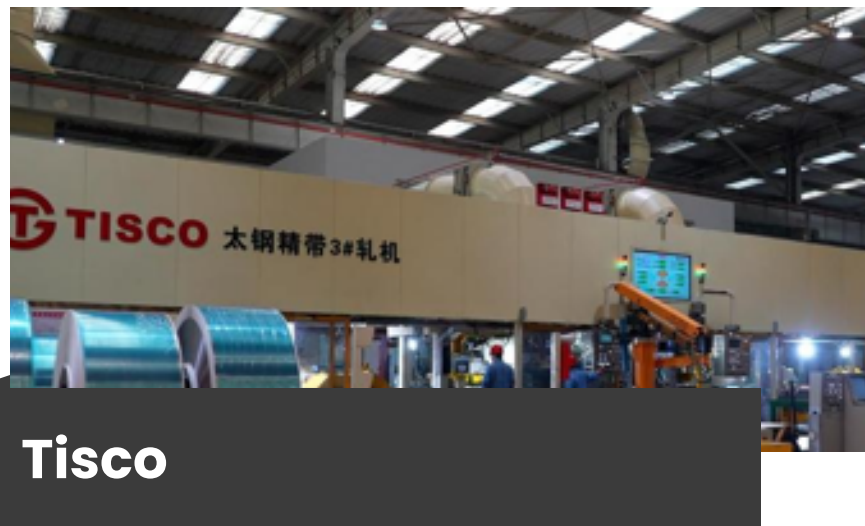
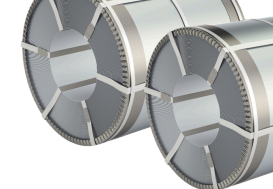
STEEL GRADE AND SIZE RANGE



Thickness	Permissible Tolerance					
	Width<600mm			600mm≤Width<1560mm		
	JIS G4305	ASTM 240	Yongjin Standard	JIS G4305	ASTM 240	Yongjin Standard
0.1≤t<0.2	±0.02	±0.015	±0.01	/	/	/
0.2≤t<0.3	±0.025	±0.02	±0.01	±0.038	±0.038	±0.015
0.3≤t<0.4	±0.03	±0.025	±0.015	±0.04	±0.04	±0.015
0.4≤t<0.5	±0.04	±0.03	±0.015	±0.04	±0.04	±0.02
0.5≤t<0.6	±0.04	±0.03	±0.015	±0.04	±0.04	±0.02
0.6≤t<0.7	±0.045	±0.035	±0.015	±0.05	±0.05	±0.02
0.7≤t<0.8	±0.045	±0.035	±0.015	±0.05	±0.05	±0.02
0.8≤t<0.9	±0.05	±0.035	±0.02	±0.06	±0.06	±0.025
0.9≤t<1.0	±0.05	±0.035	±0.02	±0.06	±0.06	±0.025
1.0≤t<1.5	±0.06	±0.04	±0.025	±0.07	±0.07	±0.03
1.5≤t<2.0	±0.07	±0.04	±0.03	±0.08	±0.08	±0.035

STEEL GRADE AND SIZE RANGE

Type		Grade	Surface	Thickness	Width	
Austenitic	Basic	304	2B	0.26-3.1mm	10-1550mm	
			BA	0.1-1.5mm	10-1250mm	
			2D	0.05-2.0mm	10-1250mm	
	High Tensile	301	2B	0.61-3.0mm	10-1560mm	
			2D	0.05-1.5mm	10-1250mm	
		Corrosion Resistance	316L	2B	0.26-3.1mm	10-1550mm
				2B	0.26-3.1mm	10-1550mm
Ferrite	Basic	430	2B	0.35-1.5mm	10-1250mm	
			BA	0.1-1.5mm	10-1250mm	
			BA1	0.2-0.5mm	10-1250mm	
			1D	0.1-1.8mm	10-1250mm	
			2BB	0.1-1.5mm	10-1250mm	
			2BD	0.1-2.25mm	10-1250mm	
			2B	0.35-1.5mm	10-1250mm	
	410S	BA	0.25-1.5mm	10-1250mm		



World No.1 in Stainless Steel Innovation

Taiyuan Iron & Steel (Group) Co., Ltd. (TISCO), a core member of Baowu Group, is globally recognized as a pioneer and leader in stainless steel production and R&D. With an annual output of 4.5 million tonnes of stainless steel and a total crude steel capacity of 16 million tonnes, TISCO is among the largest and most technically advanced stainless steel producers in the world.

As the National Technology Centre for stainless steel, TISCO has drafted over 60% of China's GB national standards, driving innovation in high-performance alloys and precision manufacturing. Its product range covers grades from 200 to 600 series, including duplex and super-austenitic steels, with thicknesses from 0.3 to 80 mm and widths up to 2000 mm — providing one-stop solutions for standard and special alloy demands.

TISCO's Nuclear & Duplex Division stands at the forefront of high-end applications:

- Nuclear Grades (316H, 304H) — Certified to ASME SA-240 and NORSOK MDS-D53, these materials are used in reactor internals, ensuring long-term safety and reliability.
- Super Austenitic Grades (904L, 254SMO) — Achieve exceptional corrosion resistance in 98% H₂SO₄, suitable for chemical and marine industries.
- Duplex Grades (2205, 2507) — With yield strength of 450 MPa (twice that of 304) and PREN ≥ 40, they are ideal for 25 MPa seawater RO pressure tubes and offshore applications.

Through decades of metallurgical excellence, TISCO has become synonymous with precision, durability, and innovation, serving as the backbone of China's stainless steel industry and a trusted supplier to the global EPC, nuclear, and energy sectors.

Stainless Steel Hot Rolled Plates

Grade	Thickness(mm)	Width(mm)	Length(mm)
0Cr13	6~40	1000-2000	3000-8000
0Cr13A1	6~20		
1Cr13	6~40		
2Cr13	6~40		
3Cr13	6~40		
1Cr11MoV	8~32	1000-2000	4000-8000
316	6~40	1000-2100	4000-12000
316Ti		1000-2000	4000-8000
321		1000-2000	4000-8000
304		1000-2100	3000-12000
304L			

Stainless Steel Hot Rolled Flat Plates

Grade	Thickness(mm)	Width(mm)	Length(mm)
1Cr13	6~14	1250-2000	3000-8000
2Cr13			
430	3~12	1219~1600 (with unfinished edges)	<=12000 (or coil)
304	5~25	1000-2100	3000-12000
304L			
316	6~20	1000-2000	4000-8000
316Ti	6~14	1000-2000	4000-8000
321	6~20	1000-2000	4000-8000

Stainless Steel Hot Rolled Coils

Grade	Diameter(mm)
304	φ 80~440
321	
316	
Cr13	φ 80~100 φ 105~350 250~400 mm (square section)

Stainless Steel Rolled Bars

Grade	Diameter(mm)	Length(mm)
304	φ 50~120	4000-8000
321		
316		
Cr13		

Stainless Steel Pipe Billets

Grade	Diameter(mm)	Length(mm)
304	φ 50~120	4000-8000

Stainless Steel Initial Rolled Commercial Billets

Grade	Thickness(mm)	Width(mm)	Length(mm)
Cr13	Slab:60~200 Square billet:150~450(square section)	350~1020	<=7000

Stainless Steel Hot Rolled Coils

Grade	Thickness(mm)	Width(mm)	Length(mm)
304	2.0~14.0	1000~2000 (with unfinished edges)	<=6000 (or coil)
316	2.5~14.0	1000~2100 (with unfinished edges)	2000~12000 (or coil)
316Ti	2.5~14.0	1000~2100	2000~12000 (or coil)
321	2.5~14.0	1000~2100	2000~12000 (or coil)
301	3.0~6.0	1000~2100 (with unfinished edges)	<=6000 (or coil)
430	2.5~7.0 3.0~6.0 3.0~12.0 (roll cutting plate)	600~1250(with unfinished edges) 1300~1600(with unfinished edges) 1600(roll cutting plate)	<=6000 (or coil)
409	3.0~6.0	1000~1250 (with unfinished edges)	<=6000 (or coil)

Stainless Steel Cold Rolled Coils

Grade	Thickness(mm)	Width(mm)	Length(mm)
304	0.3~4.0 0.4~8.0	600~1300(with unfinished edges) 800~2100(with unfinished edges)	<=6000/12000 (or coil)
316	0.3~4.0 0.4~8.0	600~1300 800~2100	2000~6000 2000~12000 (or coil)
316Ti	0.3~4.0 0.4~8.0	600~1300 800~2100	2000~6000 2000~12000 (or coil)
321	0.3~4.0 0.4~8.0	600~1300(with unfinished edges) 800~2100(with unfinished edges)	<=6000 (or coil)
301	0.3~4.0	1000~1219 (with unfinished edges)	<=6000 (or coil)
430	0.3~3.0	600~1600 (with unfinished edges)	<=6000 (or coil)
409	0.3~3.0	1000~1800 (with unfinished edges)	<=6000 (or coil)

Cold Rolled Stainless Steel Sheet & Strip - 1

Grade	Standard	Thickness (mm)	Width (mm)	Length (mm)	Delivery Condition
301	ASTM A240/A240M ASME SA-240/SA-240M	0.3~3.0	1000 or 1219	1000 or 2438 or Coil	Solution treated & pickled
304 / 304L	ASTM A240/A240M ASME SA-240/SA-240M	0.3~3.0	1000 or 1219	1000 or 2438 or Coil	Solution treated & pickled
316 / 316L	ASTM A240/A240M ASME SA-240/SA-240M	0.3~3.0	1000 or 1219	1000 or 2438 or Coil	Solution treated & pickled
316Ti	ASTM A240/A240M ASME SA-240/SA-240M	0.3~3.0	1000 or 1219	1000 or 2438 or Coil	Solution treated & pickled
410S	ASTM A240/A240M ASME SA-240/SA-240M	0.3~3.0	1000 or 1219	Coil	Annealed & pickled
410	ASTM A240/A240M ASME SA-240/SA-240M	0.3~3.0	1000 or 1219	Coil	Annealed & pickled

Cold Rolled Stainless Steel Sheet & Strip – 2

Grade	Standard	Thickness (mm)	Width (mm)	Length (mm)	Delivery Condition
430	ASTM A240/A240M ASME SA-240/SA-240M	0.3–3.0	1000 or 1219	2000 or 2438 or Coil	Annealed & pickled
SUS301	JIS G4305	0.3–3.0	1000 or 1219	1000 or 2438 or Coil	Solution treated & pickled
SUS304 /304L	JIS G4305	0.3–3.0	1000 or 1219	1000 or 2438 or Coil	Solution treated & pickled
SUS316 /316L	JIS G4305	0.3–3.0	1000 or 1219	1000 or 2438 or Coil	Solution treated & pickled
SUS316Ti	JIS G4305	0.3–3.0	1000 or 1219	1000 or 2438 or Coil	Solution treated & pickled
SUS321	JIS G4305	0.3–3.0	1000 or 1219	1000 or 2438 or Coil	Solution treated & pickled
SUS410S	JIS G4305	0.3–3.0	1000 or 1219	Coil	Annealed & pickled
SUS410、SUS420J1、SUS420J2	JIS G4305	0.3–3.0	1000 or 1219	Coil	Annealed & pickled
SUS430	JIS G4305	0.3–3.0	1000 or 1219	2000 or 2438 or Coil	Annealed & pickled

Cold Rolled Stainless Steel Sheet & Strip – 3

Grade	Standard	Thickness (mm)	Width (mm)	Length (mm)	Delivery Condition
SUH409L	JIS G4312	0.3–3.0	1000–1250	Coil	Annealed & pickled
X10CrNi18-8 (1.4310)	EN 10028-7 / 10088-2	0.3–3.0	1000 or 1219	1000 or 2438 or Coil	Solution treated & pickled
X5CrNi18-10 (1.4301)	EN 10028-7 / 10088-2	0.3–3.0	1000 or 1219	1000 or 2438 or Coil	Solution treated & pickled
X2CrNi18-9 (1.4307)	EN 10028-7 / 10088-2	0.3–3.0	1000 or 1219	1000 or 2438 or Coil	Solution treated & pickled
X5CrNiMo17-12-2 (1.4401)	EN 10028-7 / 10088-2	0.3–3.0	1000 or 1219	1000 or 2438 or Coil	Solution treated & pickled
X2CrNiMo17-12-2 (1.4404)	EN 10028-7 / 10088-2	0.3–3.0	1000 or 1219	1000 or 2438 or Coil	Solution treated & pickled
X6CrNiMoTi17-12-2 (1.4571)	EN 10028-7 / 10088-2	0.3–3.0	1000 or 1219	1000 or 2438 or Coil	Solution treated & pickled
X6CrNiTi18-10 (1.4541)	EN 10028-7 / 10088-2	0.3–3.0	1000 or 1219	Coil	Annealed & pickled

Cold Rolled Stainless Steel Sheet & Strip - 4

Grade	Standard	Thickness (mm)	Width (mm)	Length (mm)	Delivery Condition
X6Cr13 (1.4000)	EN 10028-7 / 10088-2	3.0-8.0	1000-1250	Coil	Annealed & pickled
X12Cr13 (1.4006) / X20Cr13 (1.4021) / X30Cr13 (1.4028)	EN 10028-7 / 10088-2	3.0-14.0	1000-1250	Coil	Annealed & pickled
X6Cr17 (1.4016)	EN 10028-7 / 10088-2	2.5-7.0	1000-1250	Coil	Annealed & pickled
X6CrAl13 (1.4002)	EN 10088-2	2.0-6.0	1000-1500	Coil	Annealed & pickled

Stainless Steel Medium/Heavy Plate -1

Grade	Standard	Thickness (mm)	Width (mm)	Length (mm)	Delivery Condition
304 / 304L	ASTM A240/A240M ASME SA-240/SA-240M	10-50	1500-3000	4000-10000	Solution treated & pickled
316 / 316L	ASTM A240/A240M ASME SA-240/SA-240M	10-50	1500-3000	4000-10000	Solution treated & pickled

Stainless Steel Medium/Heavy Plate -2

Grade	Standard	Thickness (mm)	Width (mm)	Length (mm)	Delivery Condition
SUS304 / 304L	JIS G4304	10-50	1500-3000	4000-10000	Solution treated & pickled
SUS316 / 316L	JIS G4304	10-50	1500-3000	4000-10000	Solution treated & pickled
SUS316Ti	JIS G4304	10-40	1500-2000	4000-10000	Solution treated & pickled
SUS321	JIS G4304	10-50	1500-3000	4000-10000	Solution treated & pickled
X5CrNi18-10 (1.4301)	EN 10028-7 / 10088-2	10-50	1500-3000	4000-10000	Solution treated & pickled
X2CrNi18-9 (1.4307)	EN 10028-7 / 10088-2	10-50	1500-3000	4000-10000	Solution treated & pickled
X5CrNiMo 17-12-2 (1.4401)	EN 10028-7 / 10088-2	10-50	1500-3000	4000-10000	Solution treated & pickled
X2CrNiMo 17-12-2 (1.4404)	EN 10028-7 / 10088-2	10-50	1500-3000	4000-10000	Solution treated & pickled
X6CrNiMoTi17-12-2 (1.4571)	EN 10028-7 / 10088-2	10-40	1500-2000	4000-10000	Solution treated & pickled
X6CrNiTi 18-10 (1.4541)	EN 10028-7 / 10088-2	10-50	1500-3000	4000-10000	Solution treated & pickled



Western China's 400-Series Powerhouse

Jiuquan Iron & Steel (Group) Co., Ltd. (JISCO) is Western China's largest stainless steel producer, with a fully integrated operation from chromite mining to stainless steel rolling. Its 400-series stainless steel line is among the most vertically integrated in China, ensuring stable quality and cost efficiency for industrial and OEM clients worldwide.

With self-supplied chromium ore and Ni-free grades, JISCO offers a USD 40–50 per tonne price advantage compared with nickel-based steels, making it highly competitive in cost-sensitive markets.

Its strong logistics network, including railway links to Kazakhstan and Turkey, provides a secure and efficient supply chain for European and Central Asian buyers.

Product Range:

- Grades: 430, 410S, 409L, 439, 441
- Thickness: 0.3 – 6.0 mm
- Width: 1219 – 1500 mm
- Surface: 2B, BA

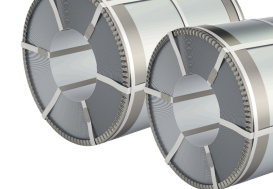
Through vertical integration, supply stability, and continuous process improvement, JISCO has become a key player in China's 400-series stainless steel sector, serving global clients in automotive, home appliance, and construction industries.

STEEL GRADE AND SIZE RANGE

Product Category (EN)	Typical Steel Grades / Designations	Thickness(mm)	Width (mm)	Length (mm)	Remarks
Vibration-damping clad sheet (carbon-steel type)	Commercial carbon steel + polymer core	0.4–2.4 total	500–1450	400–5000	Polymer thickness 0.1-0.8 metal substrate 0.3-2.0
Cold-rolled carbon coil / sheet	SPCC, SPCCD, SPCE, DC01/St12, DC03/St13, DC04/St14, DC01-Q1~DC04-Q1, Q235, St37-2G, S215G, JG300LA, JG340LA	0.25–3.00	810-1660	Coil	Box-annealed & skin-passed
Wire rod	LQ195, LQ215, LQ235, 45-75#, 77B, 82B, ER70S-6, H08Mn2SiA, H08A, H08Ab, SAE1006-1008, ML08, ML10, ML45, 65Mn, 60Si2Mn	5–25 (dia.)	—	Coil	Hot-rolled

STEEL GRADE AND SIZE RANGE

Product Category (EN)	Typical Steel Grades / Designations	Thickness(mm)	Width (mm)	Length (mm)	Remarks
Medium & heavy plate (carbon & low-alloy)	Q195-Q235(A-D), 45-50#, Q295(A-B), Q345(A-D), 16MnR, 20R, Q370R, 20g, 16MnL, A/B/D ship, 16Mng/Q345g/Q370g, X52-X65, GH60, Db60	6-40 40+ (trimmed)	1500-2600	4000-12000+	Normalised or controlled rolled
Bar / rebar	HRB400, HRB400E, HRB500, HRB500E, HPB300	Φ12-40 (ribbed) Φ12-32(plain)	—	6000-12000 (cut)	Hot-rolled
Stainless hot-rolled coil/strip	430, 410S, 420J1, 409L	3.0-12.0	750-1530	Coil	No.1 finish
Stainless hot-rolled plate	304, 304L, 316L	4.0-100	1500-2500	2000-12000	No.1 finish
Stainless cold-rolled coil/strip (2B)	304, 304L, 316L, 430	0.3-4.0	750-1530	Coil or cut	2B finish
Hot-dip galvanized coil	SGCC, SGCH, SGCD1-2, DX51D-53D+Z, S220-550GD+Z, DX51-53D+ZA, SZACC-570, SGLCC-570, DX51-53D+AZ	0.25-2.50	830-1660	Coil	Z/ZA/AZ coating
Hot-rolled carbon coil (HR strip)	Q195-Q275(A-D), Q345-Q500(A-E), 370L-700L, 330CL-J600CL, Q235B-H, HP235-345, O55/K55, L210-L485, SPHC-SPHE	1.8-12.7	950-1680	Coil	As-rolled or pickled


TSINGSHAN

The World's No.1 Stainless Steel & Nickel Group

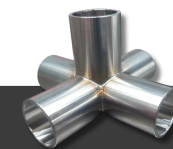
Tsingshan Holding Group, founded in 1988 and headquartered in Wenzhou, Zhejiang, is the world's largest stainless steel producer and the global leader in nickel resource development. Through complete vertical integration — from nickel mining, ferronickel smelting, and stainless steelmaking to hot/cold rolling and downstream processing — Tsingshan has built an unparalleled industrial chain covering China, Indonesia, Zimbabwe, and other countries.

With an annual stainless steel capacity exceeding 10 million tonnes, Tsingshan supplies key grades including 200, 300, and 400 series, as well as Duplex and Super Austenitic alloys.

Its overseas bases, notably the Indonesia Morowali Industrial Park (IMIP) and Weda Bay Industrial Park, have become strategic hubs for the global stainless steel and EV battery supply chain. Committed to innovation and sustainability, Tsingshan actively promotes low-carbon metallurgy, nickel-to-battery materials transformation, and circular production systems.

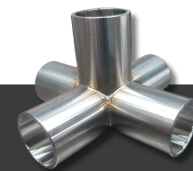
By combining resource control with technological strength, Tsingshan empowers China's stainless steel industry to compete globally — standing as the backbone of the world's stainless steel and new energy ecosystem.

List of High-Purity Stainless Steel for Industrial Welding - 1



Grade	Category			Main Applications
	Low-Si	Medium-Si	High-Si	
ER307 Series	/	ER307Mo	ER307Si	For non-magnetic steel, high-Mn steel and dissimilar welding with carbon steel
ER308 Series	ER308, ER308L	ER308HSi, ER308LHSi	ER308LSi	For welding 18Cr-8Ni steels
ER309 Series	ER309, ER309L	ER309HSi, ER309LHSi	ER309LSi	For dissimilar welding of carbon steel to stainless; good heat and corrosion resistance

List of High-Purity Stainless Steel for Industrial Welding - 2



Grade	Category			Main Applications
	Low-Si	Medium-Si	High-Si	
ER310 Series	ER310	ER310HSi		For 25Cr-20Ni stainless, self-hardening high-alloy and high-C steels
ER316 Series	ER316L	ER316LHSi	ER316LSi	For 18Cr-12Ni-Mo2 stainless; excellent intergranular-corrosion resistance
ER321 Series		ER321HSi		For 321 etc.; excellent intergranular-corrosion resistance
ER347 Series		ER347HSi		For 321, 347 etc.; excellent intergranular-corrosion resistance
Duplex Wire		ER2209		For duplex 2205 stainless
400-Series Wire		ER430LNb		Automotive industry; for 13Cr or 17Cr stainless

List of Free-Cutting Stainless Steel for Precision Components



Category	Grade	S Content / %	Size / mm	Main Applications
Austenitic	303, 303F, 303Cu, 303CuL	0.26 - 0.30	Φ 5.5 - 34	Mainly used for precision components in mechanical equipment, mobile phones, watches, and decorative items.
	316LF	0.18 - 0.22		
	316L01, S30401, 304L01	0.02 - 0.03		
Martensitic	416	0.26 - 0.30		Mainly used for shaft components in office equipment such as printers and photocopiers.
	420F	0.21 - 0.25		
	D671LS	0.16 - 0.20		

List of Antimicrobial and Corrosion-Resistant Stainless Steel for Medical Use



Type	Grade / Alloy	Main Applications
Martensitic	32Cr13Mo 60Cr13Mo	Mainly used in the medical field for various surgical instruments such as surgical forceps, hemostatic forceps, and scalpels. It is also used for high-strength components, as well as for wear parts subjected to high stress loads and certain corrosive conditions, such as automotive piston rings.
Precipitation-hardening	630 (05Cr17Ni4Cu4Nb)	Flexible medical tubing, surgical instruments; high-strength parts resisting mild acids, alkalis and salts; last-stage steam-turbine blades; structural parts below 300 °C in corrosive environments.
Austenitic	00Cr18Ni14Mo3	Human-implant plates and screws; paper & dyeing equipment; petrochemical plants; devices exposed to organic-acid corrosion.

List of Soft Magnetic Stainless Steel for Solenoid Valves



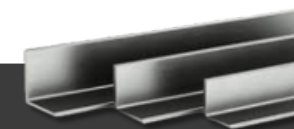
Classification	High-Sulfur	Low-Sulfur	Size / mm	Main Applications
Cr13-type	QT-F902 Y0Cr13Si2S	QT-F904 00Cr13Si2	Φ5.5~30	Mainly used in the automotive industry for automatic control valves such as fuel injectors and ABS brakes
Cr17-type	430F、430FR1 Y0Cr17SiS	QT-F905 00Cr17Si2		Mainly used in the air-conditioning and refrigeration industry for automatic control valves such as four-way valves and pneumatic valves
Cr18+Mo-type	430FRA Y0Cr18Mo2s	QT-F901 00Cr18Si2Mo2		Mainly used in the household-appliance industry for automatic control valves such as those in coffee machines and electric irons

List of High-Corrosion-Resistant Stainless Steel for Energy and Chemical Engineering



Classification	Grade	Size/mm	Main Applications
Conventional Austenitic Series	304, 304L, 316, 316L, 316H, 316Ti, 321	Bar \varnothing 65 – 130 Forged 90 – 240	For machined shafts, pipe blanks and flanges
Heat-Resistant Stainless Series	317, 317L, 310S, 314		Petrochemical & heat-exchanger parts, furnace fixtures
High-Pressure Boiler Series	304H, 321H, 347, 347H		Seamless tubes for super-heaters and re-heaters in high-pressure boilers
Duplex Stainless Series	S32205, S32750, S32760		Offshore & petrochemical shafts, pipe blanks, flanges, valve bodies
Super-Austenitic Series	904L, S31254		Offshore & petrochemical shafts, pipe blanks, flanges, valve bodies

List of High-Strength Stainless Steel for Construction Machinery



Classification	Grade	N Content / ppm	Size / mm	Main Applications
High-Nitrogen Stainless Steel	QT-A801	3 500 – 4 500	\varnothing 5.5 – 20	High-nitrogen stainless steels for mine coal-screen meshes, bridge cables, oil-drill rods, etc.
	QT-A802	4 500 – 5 500	\varnothing 5.5 – 20	
	10Cr21Mn16NiN	5 500 – 6 500	\varnothing 5.5 – 20	
	QT-A803	6 000 – 7 000	\varnothing 5.5 – 20	
Duplex Threaded Stainless Steel	S32304	1 000 – 1 500	\varnothing 12 – 25	Duplex threaded stainless for marine, energy, harbour and bridge infrastructure
	S32205	1 500 – 2 000	\varnothing 12 – 25	

List of High-Performance Tool and Die Steel



Category	Grade / Material	Main Applications
Plastic-mould steels	2-4Cr13 series, 2-4Cr13H (HH, HL), NAK80	Toy moulds, cosmetic moulds, hot-runner plates, etc.
Hot-work die steels	H11, 1.2343, H13, SKD61, 8407, 1.2344, 8418, 1.2367	Die-casting dies, aluminium-extrusion dies, hot-forging dies
Cold-work die steels	Cr12MoV, Cr12Mo1V1, D2, CrWMn, Cr5Mo1V	Blanking dies, coining dies, thread-rolling dies, etc.

List of High-Wear-Resistant Stainless Steel for Bearings and Guides



Classification	Grade	Size / mm	Main Applications
Bearing stainless	95Cr18	Wire Φ 5.5 - 34 Bar 65 - 130	For corrosion-resistant, high-strength, wear-resistant bearings, cutting tools, slide plates, mechanical shafts and other machinery parts.
	102Cr17Mo		
	108Cr17		
	90Cr18MoV		
Guide-rail stainless	68Cr17	Wire Φ 5.5 - 34	For corrosion-resistant, high-strength, wear-resistant slideways on lathes and grinding machines.
	QT-M201		

Hot Rolled Products – Austenite (Cr-Ni Series)

Width 厚度 宽度 Thickness	≤2.2	2.21-2.50	2.51-2.70	2.71-2.90	2.91-3.20	3.21-3.60	3.61-4.10	4.11-4.50	4.51-5.1	5.11-5.6	5.61-6.40	6.41-7.1	7.11-7.90	7.91-9.10	9.11-10.0
≤950															
951-1000															
1001-1050															
1051-1100															
1101-1150															
1151-1200															
1201-1250															
1251-1300															
1301-1350															
1351-1400															
1401-1450															
1451-1500															
1501-1550															
1551-1600															



Hot Rolled Products – Austenite (Cr-Ni-Mo Series)

Width 厚度 宽度 Thickness	≤2.2	2.21-2.50	2.51-2.70	2.71-2.90	2.91-3.20	3.21-3.60	3.61-4.10	4.11-4.50	4.51-5.1	5.11-5.6	5.61-6.40	6.41-7.1	7.11-7.90	7.91-9.10	9.11-10.0
≤950															
951-1000															
1001-1050															
1051-1100															
1101-1150															
1151-1200															
1201-1250															
1251-1300															
1301-1350															
1351-1400															
1401-1450															
1451-1500															
1501-1550															
1551-1600															

- Normal Sizes
- Negotiable Series
- Unavailable Series

Hot Rolled Products – Ferrite

Width 宽度	厚度 Thickness	≤2.2	2.21- 2.50	2.51- 2.70	2.71- 2.90	2.91- 3.20	3.21- 3.60	3.61- 4.10	4.11- 4.50	4.51- 5.1	5.11- 5.6	5.61- 6.00	6.01- 7.00	7.01- 8.00	8.01- 9.00	9.01- 10.0
≤950																
951-1000																
1001-1100																
1101-1200																
1201-1250																
1251-1300																
1301-1350																
1351-1400																
1401-1450																
1451-1500																
1501-1550																
1551-1600																



Hot Rolled Products – Martensite

Width 宽度	厚度 Thickness	≤2.2	2.21- 2.50	2.51- 2.70	2.71- 2.90	2.91- 3.20	3.21- 3.60	3.61- 4.10	4.11- 4.50	4.51- 5.1	5.11- 5.6	5.61- 6.40	6.41- 7.1	7.11- 7.90	7.91- 9.10	9.11- 10.0
≤950																
951-1000																
1001-1050																
1051-1100																
1101-1150																
1151-1200																
1201-1250																
1251-1300																
1301-1350																
1351-1400																
1401-1450																
1451-1500																
1501-1550																
1551-1600																

- Normal Sizes
- Negotiable Series
- Unavailable Series

Cold Rolled Products

Width 厚度 宽度 Thickness	0.20-0.29	0.30-0.39	0.40-0.49	0.50-0.69	0.70-0.89	0.90-1.09	1.10-1.29	1.30-1.69	1.70-1.99	2.00-3.00	3.01-5.00
≤849											
850-949											
950-1249											
1250-1319											
1320-1500											

■ Normal Sizes

■ Negotiable Series

■ Unavailable Series

Surface & Processing Range

钢种 Thickness 厚度 表面结构 Surface structure	0.20-0.249	0.25-0.29	0.30-0.349	0.35-1.20	1.21-1.50	1.51-2.00	2.01-2.49	2.50-2.99	3.00	3.01-5.00	5.01-6.00	6.01-10.0
奥氏体 系列 Austenitic Series	黑皮 BLACK											
	No.1											
	No.2D											
	No.2B											
	No.3											
	No.4											
	HL											
	BA											
	毛面 COARSE											
	铁素体 系列 Ferritic Series	黑皮 BLACK										
No.1												
No.2D												
No.2B												
No.3												
No.4												
HL												
BA												
毛面 COARSE												

Stainless Steel Welded Pipes

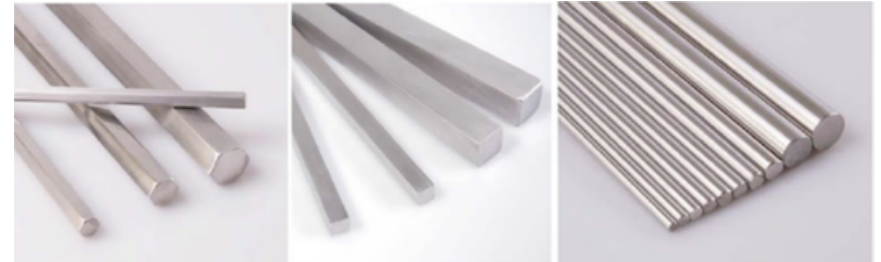
Stainless Steel Welded Pipes				
Product Specification	OD	WT	Grades	Standards
Small size welded pipes&tubes (from continuous lines)	10mm-406,40mm	0.5mm-10mm	304, 304L, 310S, 316, 316L, ASTM:A249, A269, A312, 317, 317L, 321, 347, 347H, S31803, S32205	A358, A688, A778, A789, A790, A928
Large size welded pipes (from bending lines)	219mm-2500mm	3mm-50mm	06Cr19Ni10, 022Cr19Ni10, 06Cr17Ni12Mo2, 022Cr17Ni12Mo2, 06Cr18Ni11Ti	ASME:B36,10M, B36,19M, DIN 17455, EN 10217-7
U tubes	16mm-38mm	0.5mm-2mm	1,4301, 1,4307, 1,4401, 1,4404, 1,4541, 1,4462, 1,4845	GB/T 12770, GB/T 12771, HG 20537.1, HG 20537.2, HG 20537.3, HG 20537.4

Stainless Steel Wire Rod

Application	Hardware Wire	Cold Heading	Welding	Free-cutting
200 Series	D666 202B 201Cu1	D667 201Cu	-	-
300 Series	S30400 304B 304L 304H 304M 304N 304M3 310S 316L 317L 314 316Ti 321 321H S32205	S30400 304B 304HC 304HC1 304HC2 304HC3 316L 316LCu 302HQ 321	ER308 ER309 ER310 ER316 ER317 ER316Si ER307Si ER308Si ER308LSi ER309LSi ER321Si	303F 303Cu 30401 304L01 31601 316L01
400 Series	00Cr17(430L) 00Cr13 0Cr13(410S)	-	-	-
Duplex	S31803 S32205 S32750	-	S31803 S32205 S32750	-

Stainless Steel Bright Bar

Type	Available Size (mm)	Length (mm)	Tolerance	Straightness (mm/m)	Roughness (um)	
Peeling bar	20-100	2000-7000	h10-h12	1	Ra3.2	
CD bar	Roung bar	4.7-100	2000-6500	h8-h11	0.5	Ra1.6
	Square bar	12-35	2000-6500	h11-h12	0.5	Ra1.6
	Hex bar	12-40	2000-6500	h11-h12	0.5	Ra1.6
CG bar	4.7-40	2000-6500	h7-h8	0.2	Ra0.8	



Austenitic Stainless Steel Seamless Pipes

Grade	Instrument tube	Heat exchanger tube	Boiler tube	Marine pipe	Petrochemical pipe	Standard pipe
TP304	*	*		*	*	*
TP304L	*	*		*	*	*
TP304LN	*	*		*	*	*
TP304H	*	*	*		*	*
S30432			*			
TP310S	*	*		*	*	*
TP310H	*	*	*	*	*	*
TP310HCbN			*			
S31050	*	*			*	*
TP316	*	*		*	*	*
TP316L	*	*		*	*	*
TP316LN	*	*		*	*	*
TP316Ti	*	*		*	*	*
TP316LMOD	*	*			*	*

Austenitic Stainless Steel Seamless Pipes

Grade	Instrument tube	Heat exchanger tube	Boiler tube	Marine pipe	Petrochemical pipe	Standard pipe
TP317L	*	*		*	*	*
TP321	*	*		*	*	*
TP321H		*	*		*	*
TP347	*	*		*	*	*
TP347H		*	*	*	*	*
TP347HFG			*			

Super Austenitic Stainless Steel Seamless Pipes

Grade	Instrument tube	Heat exchanger tube	Boiler tube	Marine pipe	Petrochemical pipe	Standard pipe
NO8904	*	*			*	*
NO8367	*	*			*	*
S31254	*	*			*	*

Ferrite-Austenite Duplex Stainless Steel Seamless Pipes

Grade	Instrument tube	Heat exchanger tube	Marine pipe	Petrochemical pipe	Standard pipe
S31500	*	*	*	*	*
S31803	*	*	*	*	*
S32205	*	*	*	*	*
S32750	*	*	*	*	*
S32760	*	*	*	*	*

API Corrosion Resistant Alloy Pipes

Grade	Instrument tube	Heat exchanger tube	Marine pipe	Petrochemical pipe	Standard pipe
LC30-1812				*	*
LC65-2205				*	*
LC65-2506				*	*
LC80-2507				*	*
LC30-2242				*	*

Nickel Alloy Seamless Pipes

Grade	Instrument tube	Heat exchanger tube	Marine pipe	Petrochemical pipe	Standard pipe
N08800	*	*		*	*
N08810	*	*		*	*
N08811	*	*		*	*
N08020	*	*		*	*
N08825	*	*		*	*
N08028	*	*		*	*
N06600	*	*		*	*
N06601	*	*		*	*
N06625	*	*		*	*

Fittings



Specifications

9GB	GB/T 12459, GB/T 13401, SH 3408, SH 3409
ASTM	A182, A403, A815, B366
ASME	SA182, SA403, SA815, SB366, B16.5, B16.9, B16.11
MSS	SP43, SP75, SP97
EN	EN 10253-3, EN 10253-4

OD Range

WP-S(seamless)	1/4" - 24" (13.72mm-609.60mm)
WP-W(welded)	1/2" - 12" (21.34mm-323.85mm)
WP-WX(welded&X-ray)	14" - 40" (355.60mm-1016mm)

Wall Range	
ASME B36.19M	5S, 10S, 40S, 80S
ASME B36.10M	5, 10, 20, 30, 40, 60, 80, 100, 120, 160, STD, XS, XXS
SI	1.65mm - 30mm

